

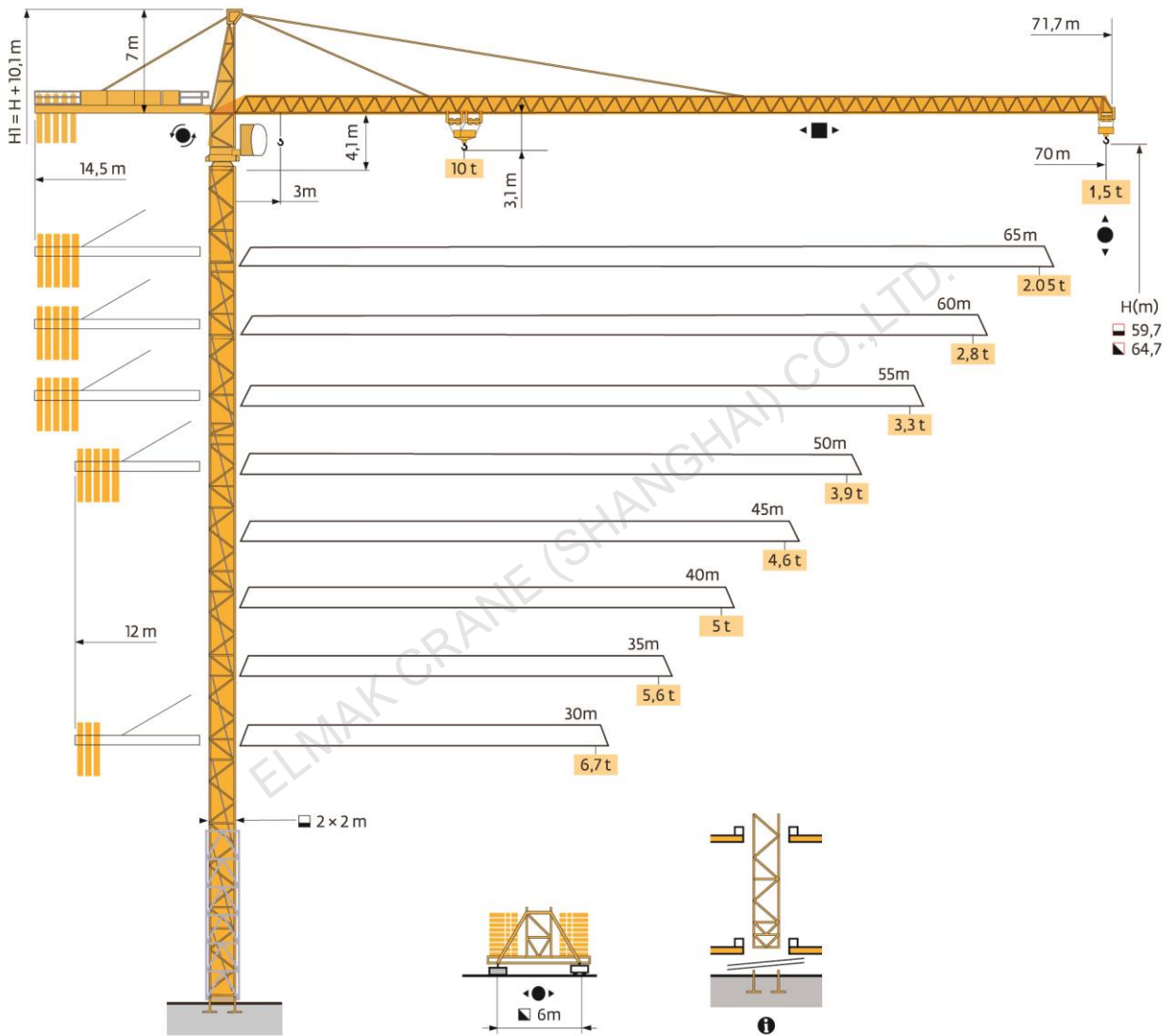
ELMAK[®]

ELMAK CRANE (SHANGHAI) CO.,LTD.

TOPKIT TOWER CRANE

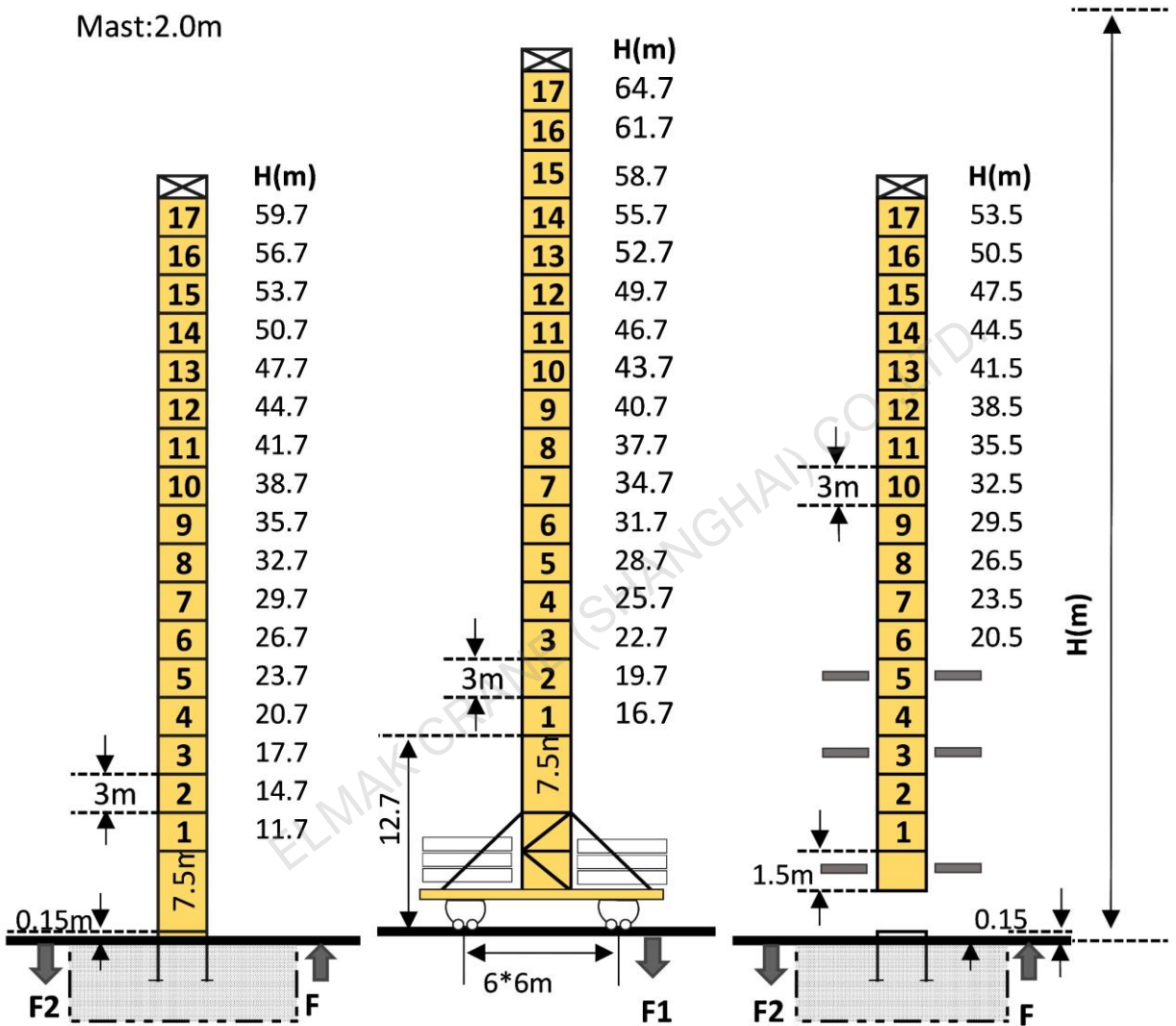
www.elmaktowercrane.com

EMK7015-10



Mast-Reaction

Mast: 2.0m



P20A		
	●	■
F2	129.0t	175.0t
F3	82.0t	1330t
👤	60.0t	

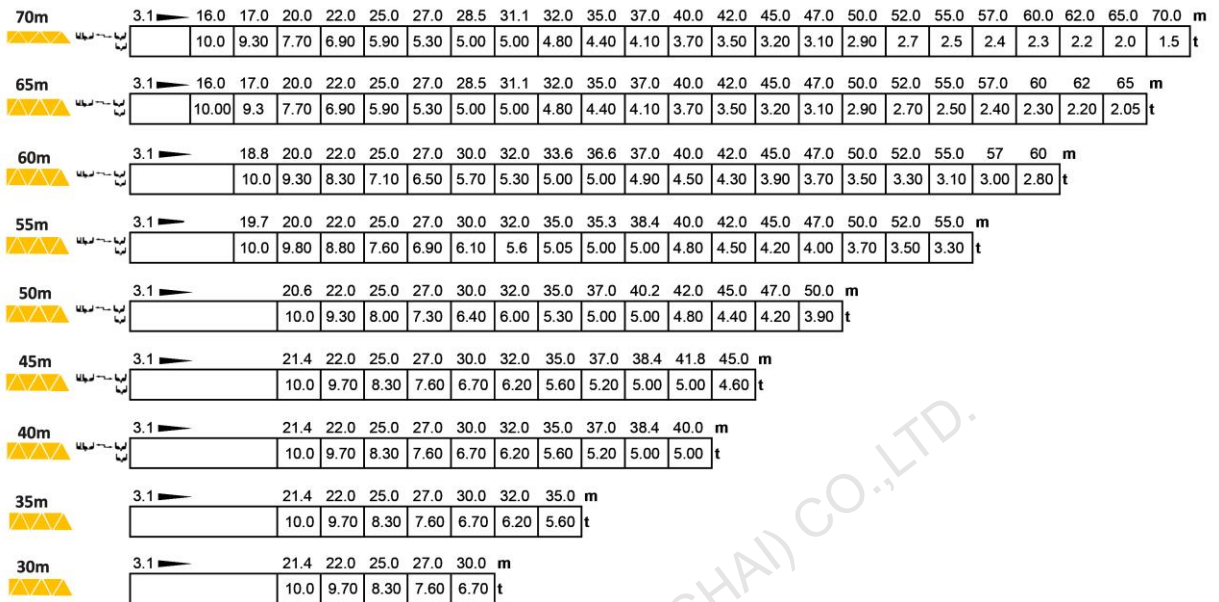
P20A		
	●	■
F2	94.0t	117.0t
👤	71.0t	

BA66A

👤 Total weight of free standing height(exclude counter weight ballast)

● In service ■ Out of service F Reactions

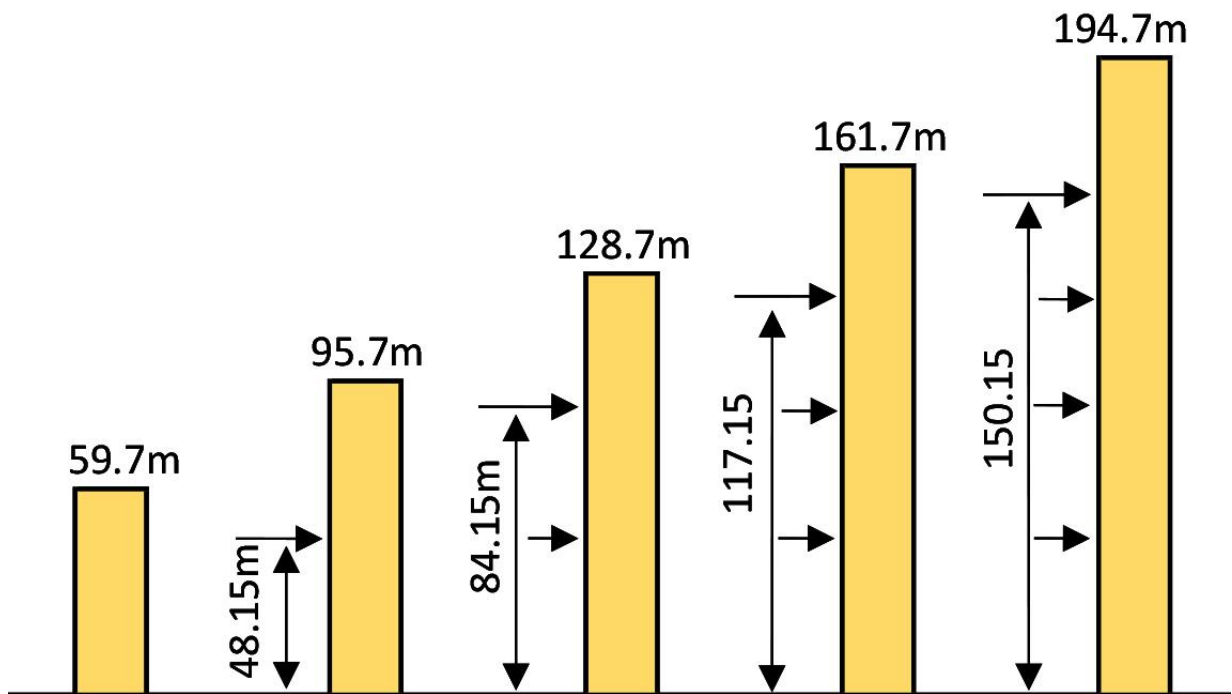
Loading Diagrams



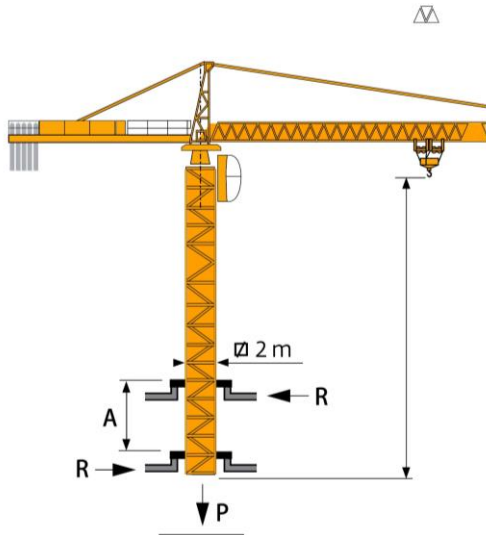
Anchorage

P 20A

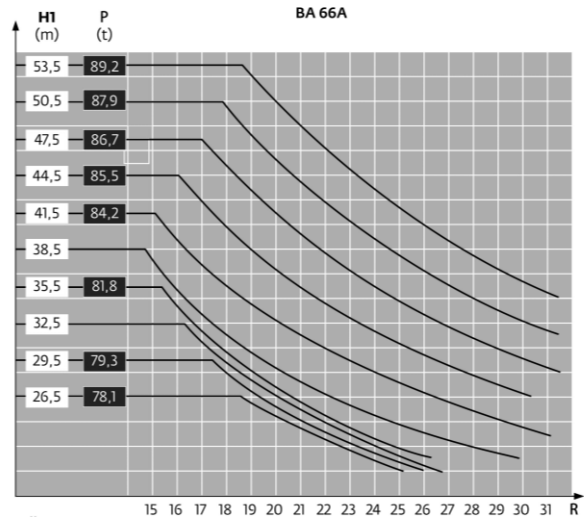
H > 194.7m



Climbing Crane



A Distance between collars
H1 Crane height
P Crane weight(in service)
R Horizontal reaction



Mechanisms

Items	Mechanisms	Speed/Hoist weight				Rope	Motor(KW)
		M/min	t	M/min	t	Capacity	400V 50Hz
Hoisting	55 RCS 25	↓↑		↓↑		500m	40
		0-44	5.00	0-22	10.00		
		0-88	2.50	0-44	5.00		
	75LVF25 (Optima)	53.0	5.00	26.5	10.00	500m	55
		68.0	3.75	34.0	7.50		
95.0		2.50	47.5	5.00			
		117.0	1.25	58.5	2.50		
Trolley	120JXL	10~50(10t)-100(5t)					4.4
Slewing	RCV145	0-0.7rpm					2*145Nm
Traveling	RT 324 A1 2V R≥10m	13.5-27m/min					4*5.2
Necessary Electric Power:55 RCS-75KVA;75LVF-100KVA							
Main electrical components: Schneider (Frequency converter, Contactor,Relay)							