

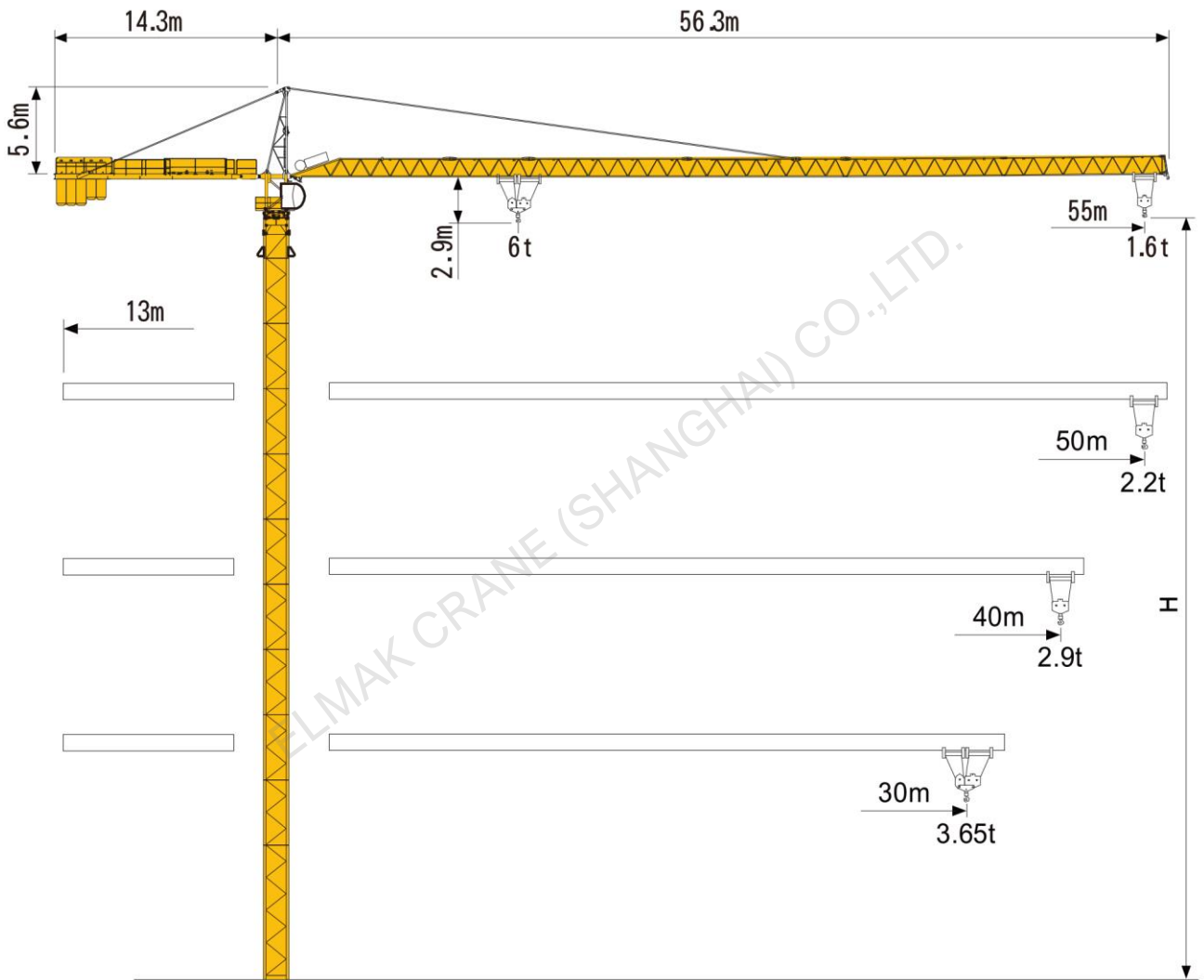
ELMAK[®]

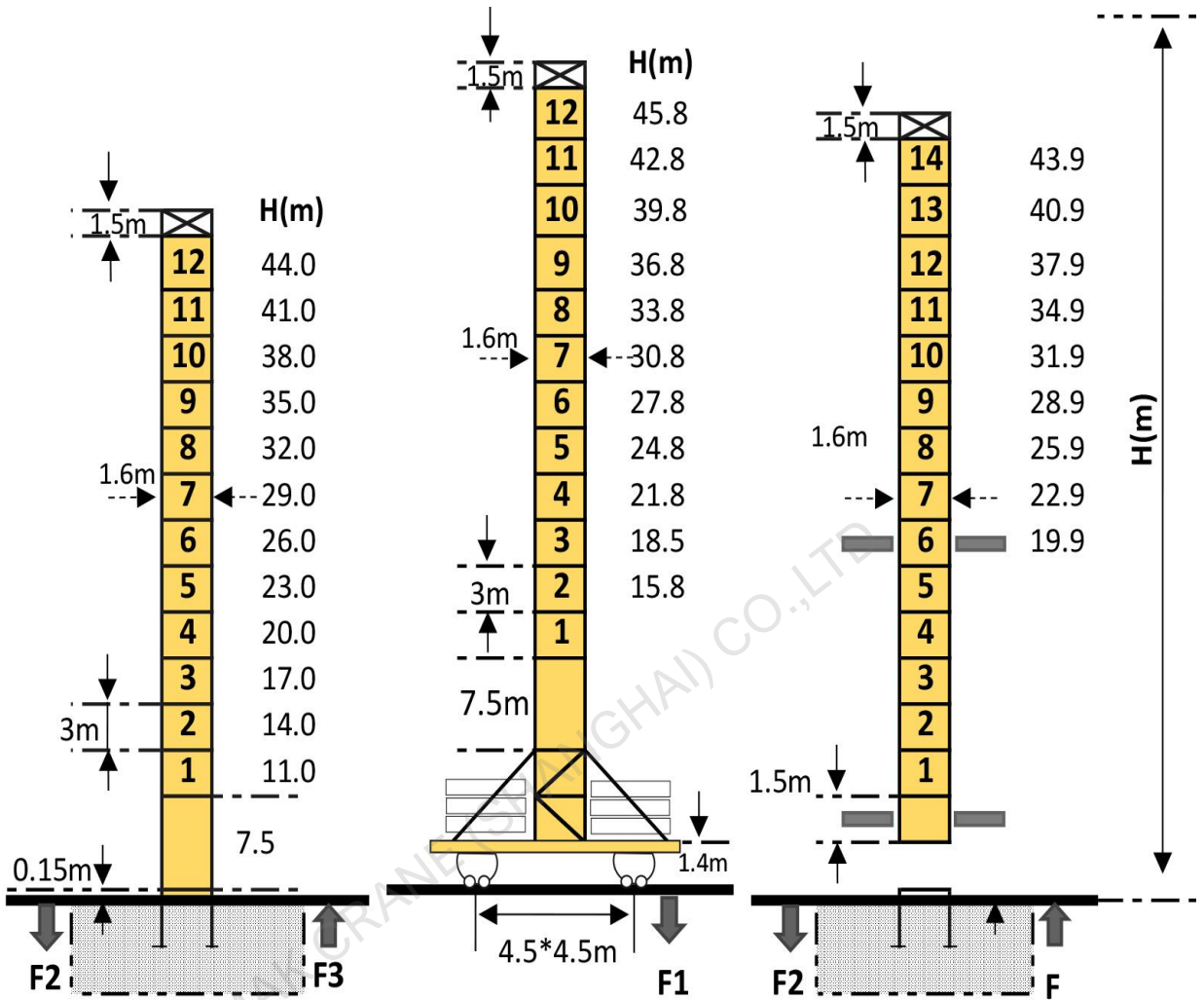
ELMAK CRANE (SHANGHAI) CO.,LTD.

TOPKIT TOWER CRANE

www.elmaktowercrane.com

EMK5516-6

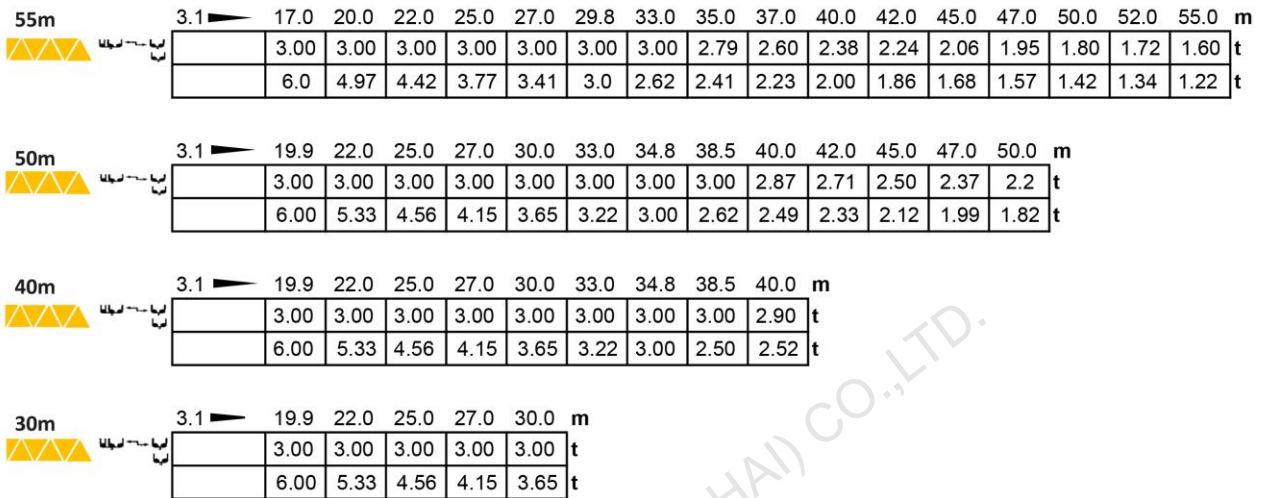
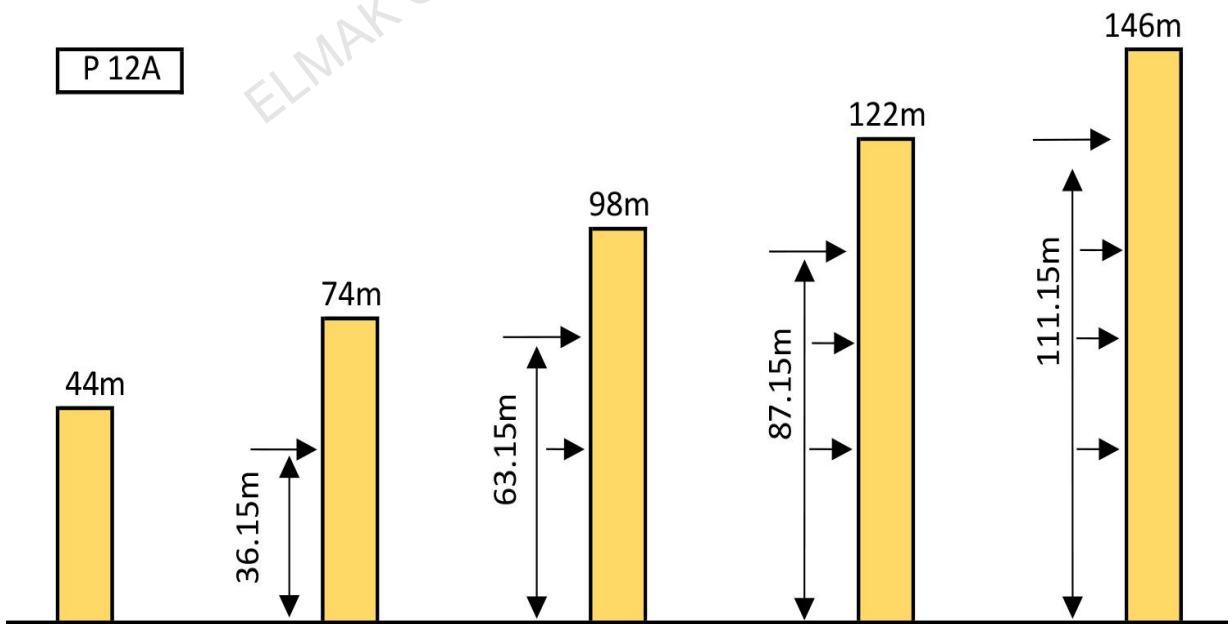


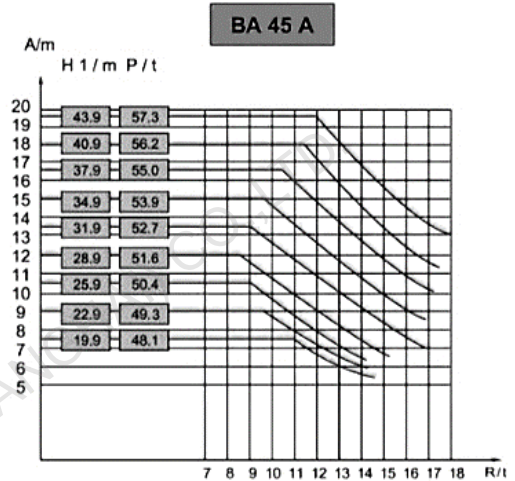
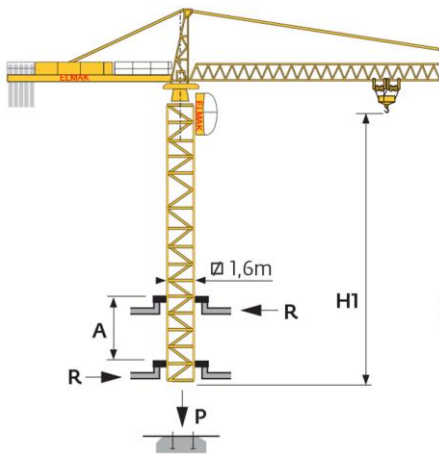
Mast-Reaction




F2	●	88.0t
	■	121.0t
F3	●	59.0t
	■	95.0t
	👤	36.0t

F1	●	61.0t
	■	77.0t
	👤	43.0t

A min	13m
R max	18t
P max	57.3t

Loading Diagrams

Anchorage
P 12A


Climbing Crane

Mechanisms

Items	Mechanisms	Speed/Hoist weight				Rope Capacity	Motor(KW) 380V 50Hz
		M/min	t	M/min	t		
Hoisting	33PC15					486m	24/24/4.5
		6	3	3	6		
		40	3	20	6		
		80	1.5	40	3		
		33LVF15	0-40	3	0-20	6	360m
		40-80	1.5	20-40	3		
Trolley	95JKL	0-58m/min					95Nm
Slewing	RCV95	0~0.8rpm					2*95Nm
Traveling	RT324	12.7/25.4m/min					2*2.6/5.2kw
Necessary Electric Power		134KVA/160KVA					
Main electrical components: Schneider (Frequency converter, Contactor, Relay)							